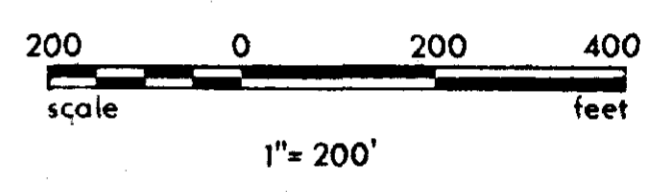
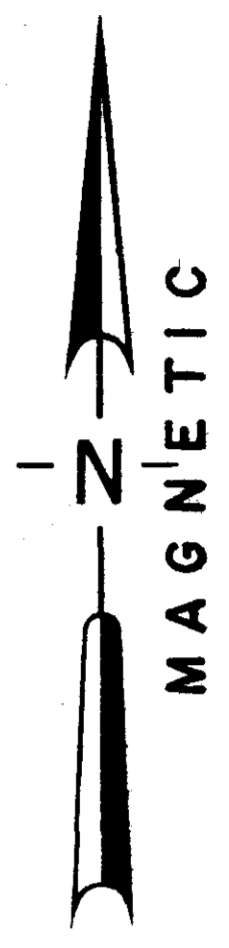
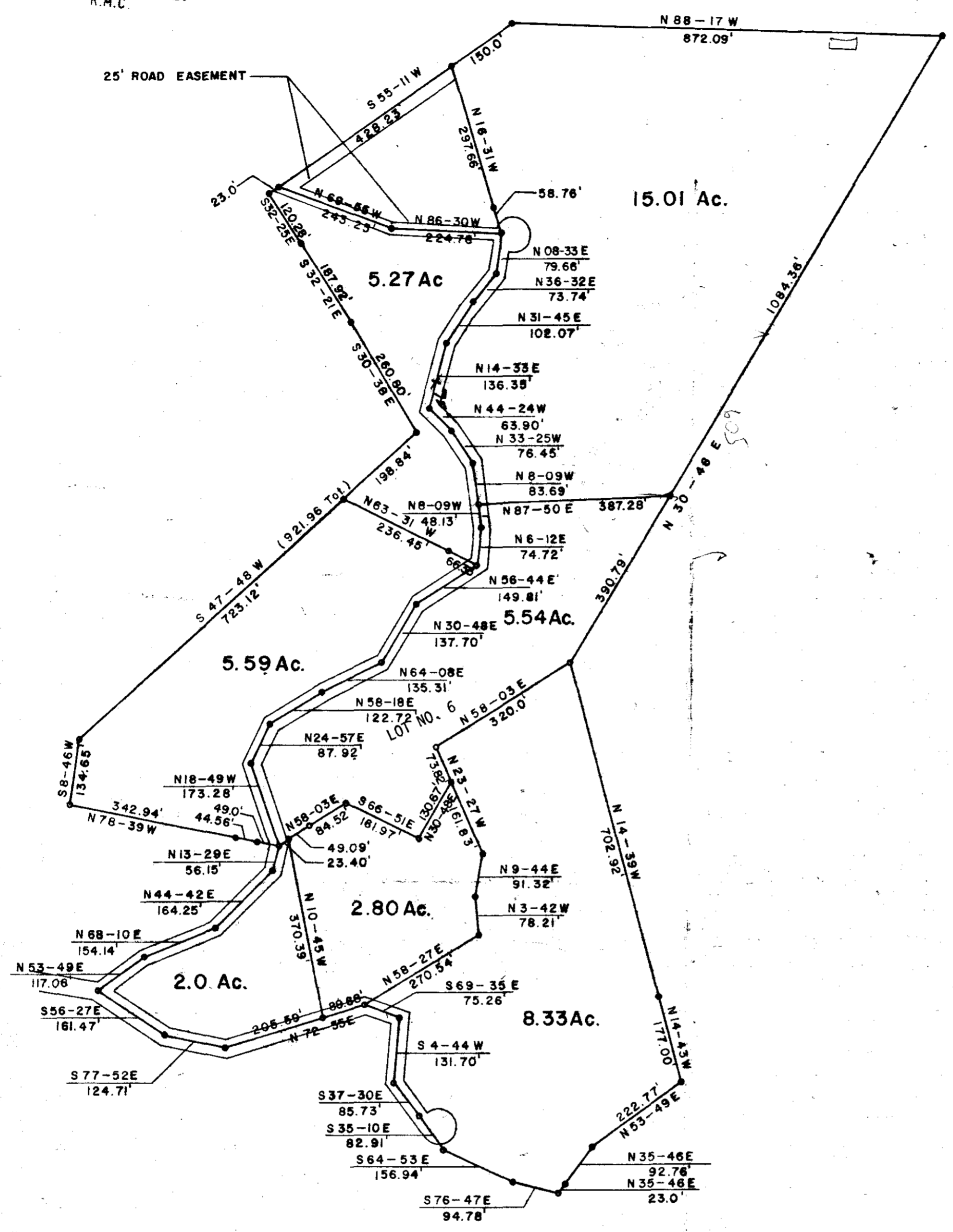


FILED
GREENVILLE CO. S.C.
OCT 29 2 09 PM '80
DONNIE S. TANKERSLEY
R.M.C.



OCT 29 1980

13499

7-Y-98

THIS PLAT IS NOT A SUBDIVISION
AS DEFINED BY THE GREENVILLE
COUNTY SUBDIVISION REGULATIONS.
OCT 29 1980 *Stephen W. Tanner*
Chairman, Secretary, or Director of
Planning.
Greenville County Planning Commission

LOT 6, CONTAINING 5.54 ACRES BEING PROPERTY OF KENNETH E. SOWELL

PROPERTY SURVEY OF
LOTS 2,3,4,5,6, & 7
LOCATED ON PARIS MOUNTAIN
GREENVILLE SOUTH CAROLINA

NOTE:
INFORMATION SHOWN ON THIS PLAT WAS COMPILED FROM INFORMATION
SHOWN ON PLAT BY R.J. COOPER FOR MR. RICK FAIRBANKS DATED 10 JULY 1978,
AND DOES NOT CONSTITUTE AN ACTUAL FIELD SURVEY.
William W. Starnes #7261

| | | | | | |
|------|--|---------|--------|-----------|-----------|
| SEAL | ARBOR ENGINEERING | DRAWN | DESIGN | CHECK | DATE |
| | P.O. BOX 263, GREENVILLE, S.C. | WNS | WNS | WNS | 16 NOV 79 |
| | LANDSCAPE ARCHITECTS-ENGINEERS-RECREATIONAL PLANNERS | SCALE | FILE | DWG. NO. | |
| | | 1"=200' | | 79001-III | |